

# CERTIFICATE OF LOCATION OF GOVERNMENT CORNER

EAST QUARTER \_\_\_\_\_ Corner of Section 2 , Township 107N , Range 40W

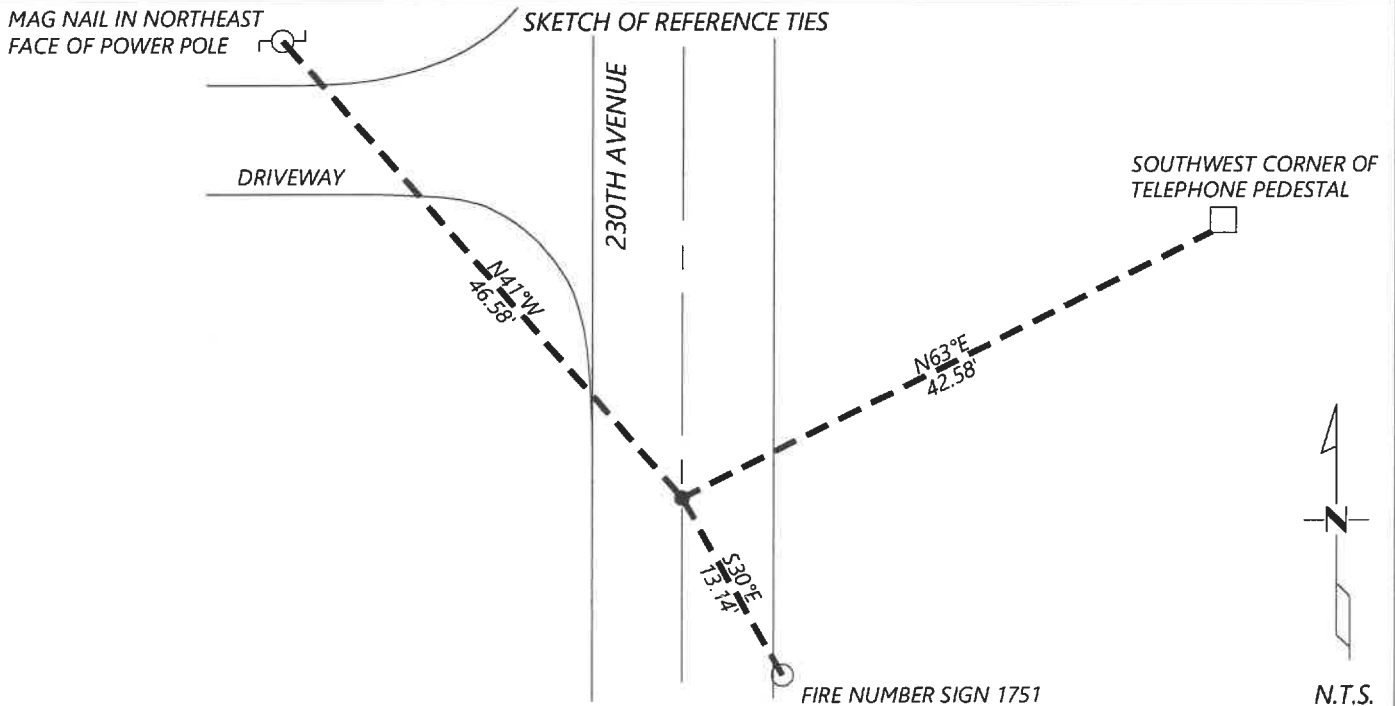
5th Principal Meridian, State of Minnesota, County of MURRAY

At the corner location shown on the sketch:

On 11/04/2020 found a FIRMLY PLANTED 9X9" STONE WITHOUT VISIBLE MARKINGS AND WITH WOOD REMNANTS.  
DATE DOWN 2.4FT BELOW GRADE

left monument as found       lowered monument       removed monument (explain)

On 12/16/2020 placed a NO. 4 REBAR WITH CAP 45874 ABOVE STONE, 0.5FT BELOW GRADE.  
DATE



Statement of evidence for this corner location is on back of this page.

I hereby certify that this document was researched and prepared by me or under my direct supervision and that I am a licensed Land Surveyor under the laws of the State of Minnesota.

Signature [Handwritten Signature]

Date 6/16/2021 License No. 45874

Title:

- Land Surveyor
- Professional Engineer
- County Surveyor
- County Engineer

OFFICE OF THE COUNTY RECORDER

County of Murray

I hereby certify that this document was filed in the Co.

Recorder's office at \_\_\_\_\_ M. on the \_\_\_\_\_ day of \_\_\_\_\_ A.D. 20 \_\_\_\_\_

County Recorder Karen Brown  
by JUN 22 2021, Deputy

DOCUMENT NO. \_\_\_\_\_

**Statement of Evidence:**

East Quarter Corner of Section 2, Township 107 North, Range 40 West, 5th Principal Meridian, Murray County, Minnesota.

1861 July, GLO Notes: Set post on mound.

2020 December, Westwood Professional Services excavated with a backhoe and found a 9x9" planted stone without etching marks down 2.4ft with remnants of wood on north side. I accepted the found stone and set a  $\frac{1}{2}$ " rebar with cap LS 45874 above it, 0.5ft below road grade.

Analysis of the recovered data, field evidence and survey measurements, indicates that the monument found is the correct perpetuation of this corner. For additional information concerning this corner please contact Westwood Professional Services.